

7013H

TELEHANDLER



Performance

| | | |
|-----------------------------|-----------|-------------|
| Rated Capacity | 7,100 kg | 15,650 lb |
| Maximum Lift Height | 13.28 m | 43 ft 7 in. |
| Load at Max Height | 3,062 kg | 6,750 lb |
| Maximum Forward Reach | 9.47 m | 31 ft 1 in. |
| Load at Max Reach | 907 kg | 2,000 lb |
| Frame Leveling | 8 degrees | |
| Lift Speed (boom retracted) | | |
| Up | 18.3 sec | |
| Down | 13.6 sec | |
| Boom Speed | | |
| Extended | 15.8 sec | |
| Retracted | 12.3 sec | |
| Top Travel Speed | 32 kph | 20 mph |
| Drawbar Pull (loaded) | 102 kN | 23,000 lb |
| Outside Turning Radius | 4.01 m | 13 ft 2 in. |
| Operating Weight | 15,265 kg | 33,660 lb |

Standard Specifications

Engine

| | | |
|---------------------------|----------------|------------|
| Make and Model | Deutz TCD 3.6L | |
| No. of Cylinders | 4 | |
| Displacement | 3.6 L | 220 cu in. |
| Gross Basic Power | 100 kW | 134 hp |
| Maximum Torque @ 2200 rpm | 500 Nm | 369 lb-ft |
| Fuel Tank Capacity | 148 L | 39 gal. |

Transmission

Hydrostatic 2-speed

Axles

Trunnion mounted planetary 45 degree steer axles.
 Integral steer cylinder.
 High bias limited slip differential on front axle.

Brakes

Service brakes are inboard wet disc brake on front and rear axles and include inching.
 Parking brakes are wet disc spring applied hydraulic release on front axle.

Tires

| | |
|----------|-------------|
| Standard | 17.5-25 SGG |
| Optional | Foam-Filled |

Cab

- Certified ROPS/FOPS structure
- Horn
- Tilt & auxiliary hydraulics on joystick
- Adjustable seat
- Single joystick controls
- Anti-theft
- Enclosed cab
- Tilt steering column
- Retractable sunscreen

Steering 4-Wheel

Hydraulic power steering
 Operator selectable 4-wheel circle, 4-wheel crab, 2-wheel front

Instruments

- Volt meter
- Hourmeter
- Engine oil pressure gauge
- Temperature gauge
- Fuel gauge
- DEF gauge

Hydraulic System-Implement

| | | |
|----------|-------|--------|
| Capacity | 255 L | 67 gal |
|----------|-------|--------|

Load sense piston pump. Auxiliary hydraulics used for all attachments equipped with cylinders or other hydraulic components.

Accessories & Options

- Auxiliary Electrics
- Hydraulic Coupler
- Road Lights
- Fenders
- Air Conditioning
- Brick Guards
- Work Lights
- Rotating Beacon
- Roof Wiper
- Reversing Fan
- Ride Control
- Reverse Sensing System
- Boom Brushes
- Dual Auxiliary Hydraulics
- Arctic Package
- Secondary Steering
- Boom Float
- Multi-Function Display with Reversing Camera
- White Noise Back-up Alarm
- Multiple Seat Options
- SmartLoad Technology

Attachments

| | | |
|--------------------------------|-----------------------------|---------------------------|
| Standard Carriage | 1.5 m | 60 in. |
| | 1.8 m | 72 in. |
| | 2.2 m | 87 in. |
| Dual Fork Positioning Carriage | 1.8 m | 72 in. |
| Side-Shift Carriage | | |
| with Dual Fork Positioning | 1.8 m | 72 in. |
| General Purpose Bucket | 2.38 m, 198 m ³ | 94 in., 2.6 cu yd |
| Light Material Bucket | 2.38 m, 3.97 m ³ | 94 in., 5.2 cu yd |
| Multipurpose 4-in-1 Bucket | 2.38 m, 0.99 m ³ | 94 in., 1.3 cu yd |
| Multipurpose 4-in-1 Bucket | 2.38 m, 1.98 m ³ | 94 in., 2.6 cu yd |
| Grapple Bucket | 2.38 m, 1.29 m ³ | 94 in., 1.7 cu yd |
| Material Handling Arm | 7,598 kg | 16,750 lb Capacity |
| Hook, Coupler Mounted | 7,598 kg | 16,750 lb Capacity |
| Winch, Coupler Mounted | 3,629 kg | 8,000 lb |
| Bale Cradle, Round Bale | 3,175 kg | 7,000 lb Capacity |
| Bale Clamp, Square Bale | 4,536 kg | 10,000 lb Capacity |
| Pipe Grapple | 2.4 m, 3,629 kg | 96 in., 8,000 lb Capacity |
| Log Handler | 2.03 m, 3,629 kg | 80 in., 8,000 lb Capacity |
| Steel Coil Handler | 7,598 kg | 16,750 lb Capacity |

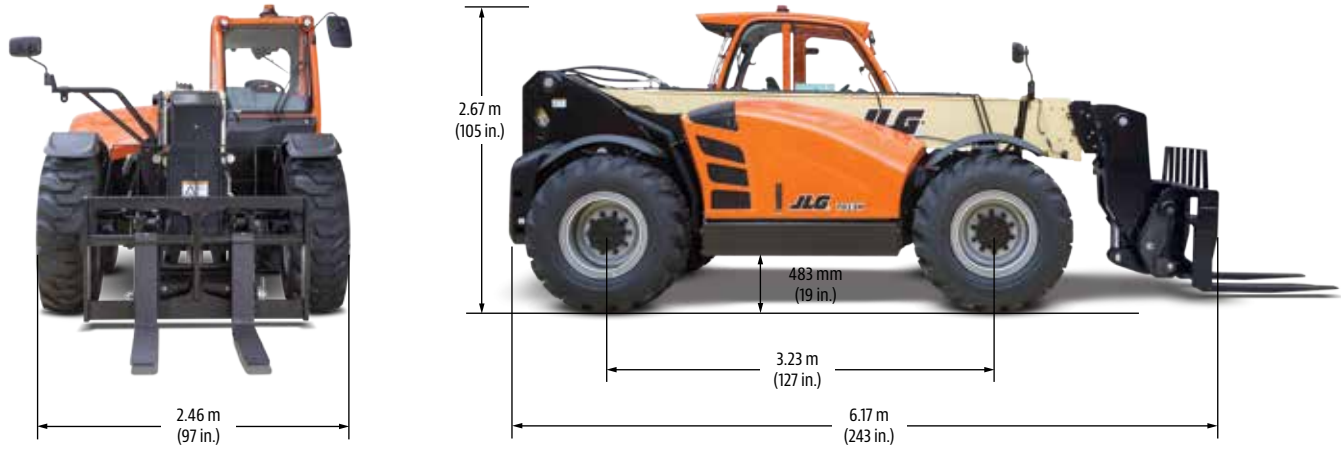
7013H

TELEHANDLER

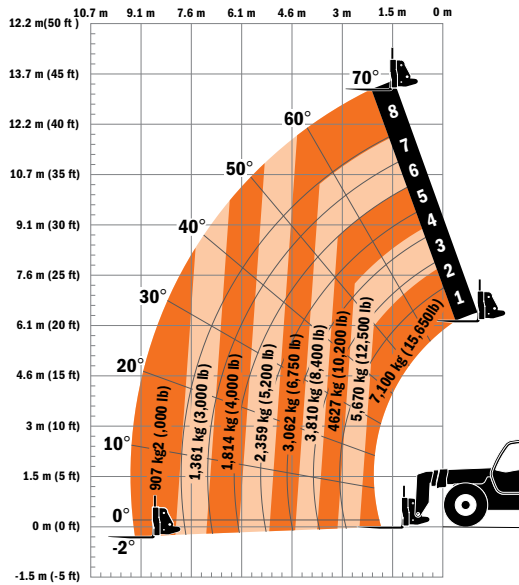


Dimensions

All dimensions are approximate.



Load Chart



The JLG "1 & 5" Warranty

JLG Industries, Inc. backs its products with its exclusive "1 & 5" Warranty. We provide coverage on all products for one (1) full year, and cover all specified major structural components for five (5) years. Due to continuous product improvements, we reserve the right to make specification and/or equipment changes without prior notification. This machine meets or exceeds applicable OSHA Regulations in 29 CFR 1910.67, 29 CFR 1926.453, ANSI A92.5-2006, and CSA Standard CAN3-B354.2-M82, as originally manufactured for intended applications.

Part No.: 3132249
Printed in USA



JLG Industries, Inc.
1 JLG Drive
McConnellsburg, PA 17233-9533
Telephone 717-485-5161
Toll-free in US 877-JLG-LIFT
Fax 717-485-6417
www.jlg.com

An Oshkosh Corporation Company